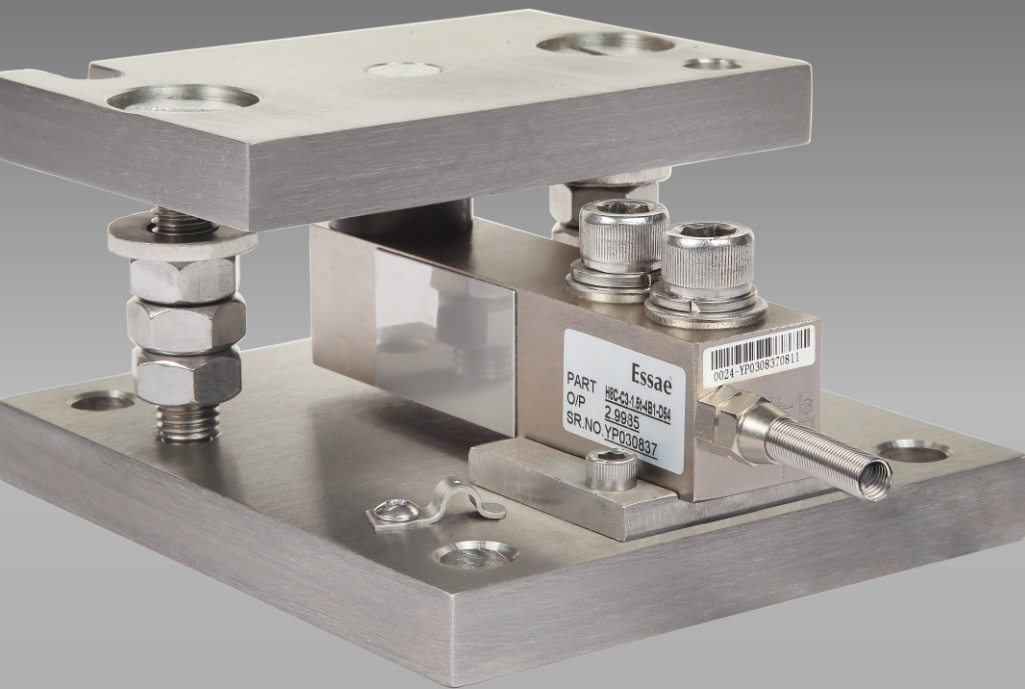


# SI/DX/DF-Series

Tank Weighing System

**Essae**<sup>®</sup>  
...for Excellence



Ideal Weighing Solution for Process Industries



## Technical Specification

Model	Capacity (kg)	Accuracy (g)	Load cell Kit	MOC	
SI-850 / DX/DF-451	300	100	3 Load cell	SS	
	1500	500			
	3000	1000			
	6000	2000			
	10000	5000			
	SI-850	300	100		4 Load cell
		1500	500		
		3000	1000		
		6000	2000		
		10000	5000		
SI-850	600	100	3 Load cell		
	600	100	4 Load cell		
DX/DF-451	600	200	3 Load cell		
	600	200	4 Load cell		



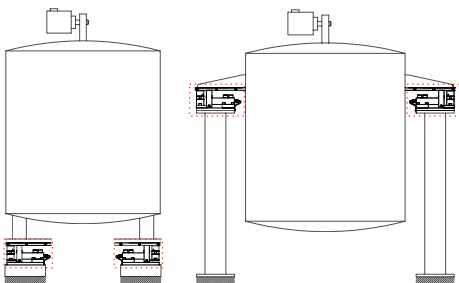
### Salient Features

- Wide choice of indicator options
- SI-850/DX-451 - Fully Stainless Steel (SS-304)
- DF-451 - Aluminum casting with IP-65
- Digital 4-20 mA (Factory option)
- Set point output (Factory option)
- Display type
  - SI-850 - Graphic LCD
  - DX/DF-451 - 7 Segment green LED

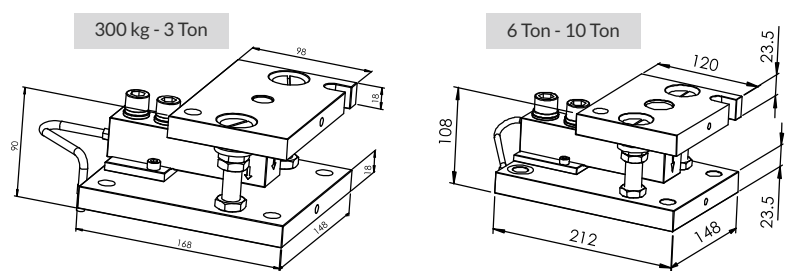
### Load cell Specification

- Tool steel IP-67 shear beam load cell
- Adhesive sealed
- High reliability
- Built-in jack bolt for easy maintenance
- Lift off protection provided for up word movement

### Schematic Representation



### Load cell Dimension (mm)



## Essae-Teraoka Pvt. Ltd.

410, 100ft Road, 4th Block,  
Koramangala, Bengaluru-560 034

info@essae.com

<http://www.essae.com>

+91 80 2511 3021

1-800-425-3111

0-78488 12346



Your Essae representative

Note: The above model meets the statutory and regulatory requirements as per the provision of legal metrology Act 2009 and legal metrology (General) Rule, 2011. Specifications are subject to change without notice. Other names and logos used are property of respective brands.